



WA 06-165/T Metall-EN54

- all-metal construction
- vandal-proof
- BS 5839



EN 54-24:2008
Ref. Nr.: 007-13
ID-Code: SAA-LS07
1438/CPD/0231

ic audio GmbH, Boehringerstraße 14a,
D-68307 Mannheim, Germany

CE-Symbol gemäß Richtlinie 93/68EWG

This speaker is the best choice for sensitive installations like in prisons or industrial projects where plastic and wooden materials cannot be used.

The 6W powered speaker is equipped with a 165mm full-range loudspeaker chassis and a 100V transformer with 3 power adjustments. The extremely stable metal housing in RAL 9010 with corrosion-resistant powder coating, offers tremendous resilience in unobtrusive design. For additional reliability, a 2 pin-ceramic block, a thermal fuse is provided and the speaker chassis is impregnated against wetness.

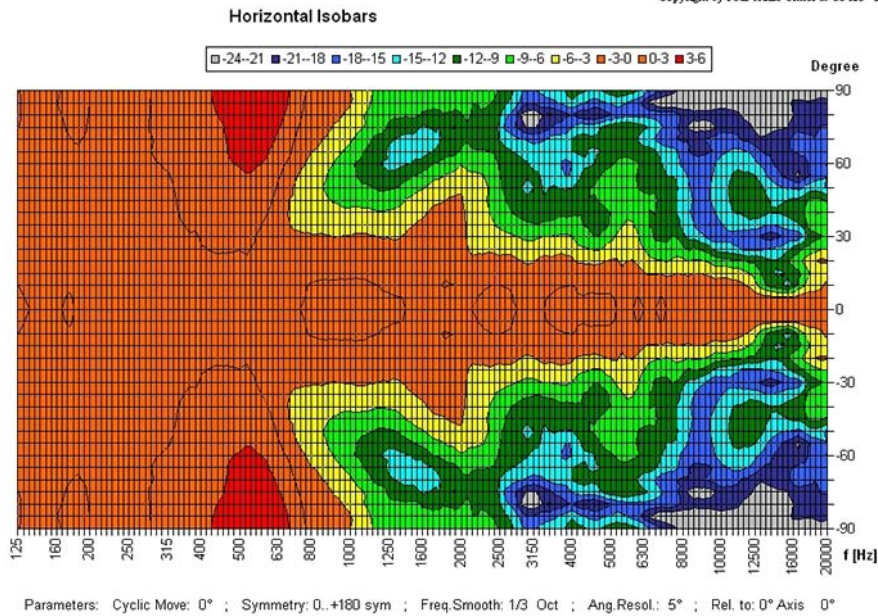
The speaker is also secured with protection class IP 21C against the risks of environmental influences.

The speaker is also compliant with the British Standard BS 5839, Part 8.

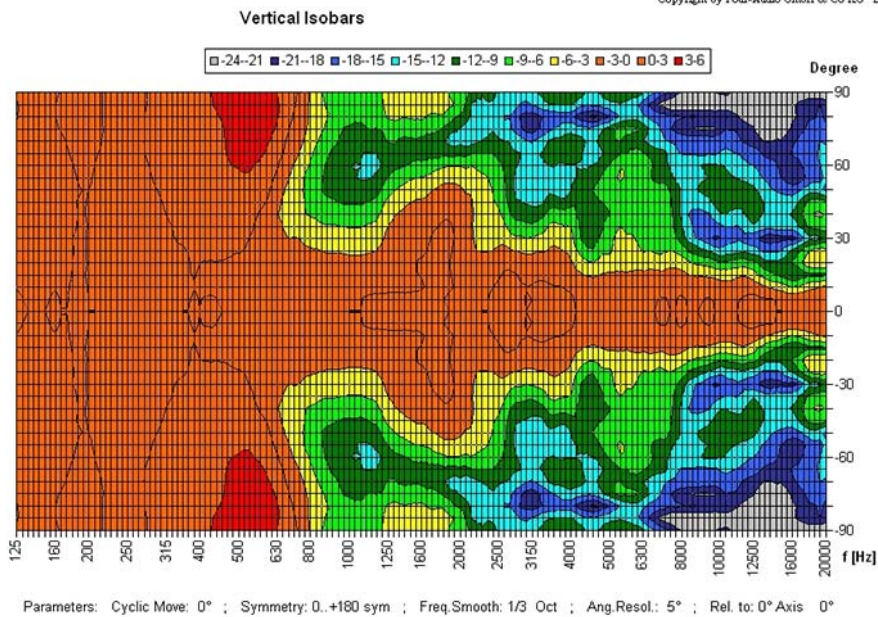
Quick and easy mounting with screws.

Polar Diagrams

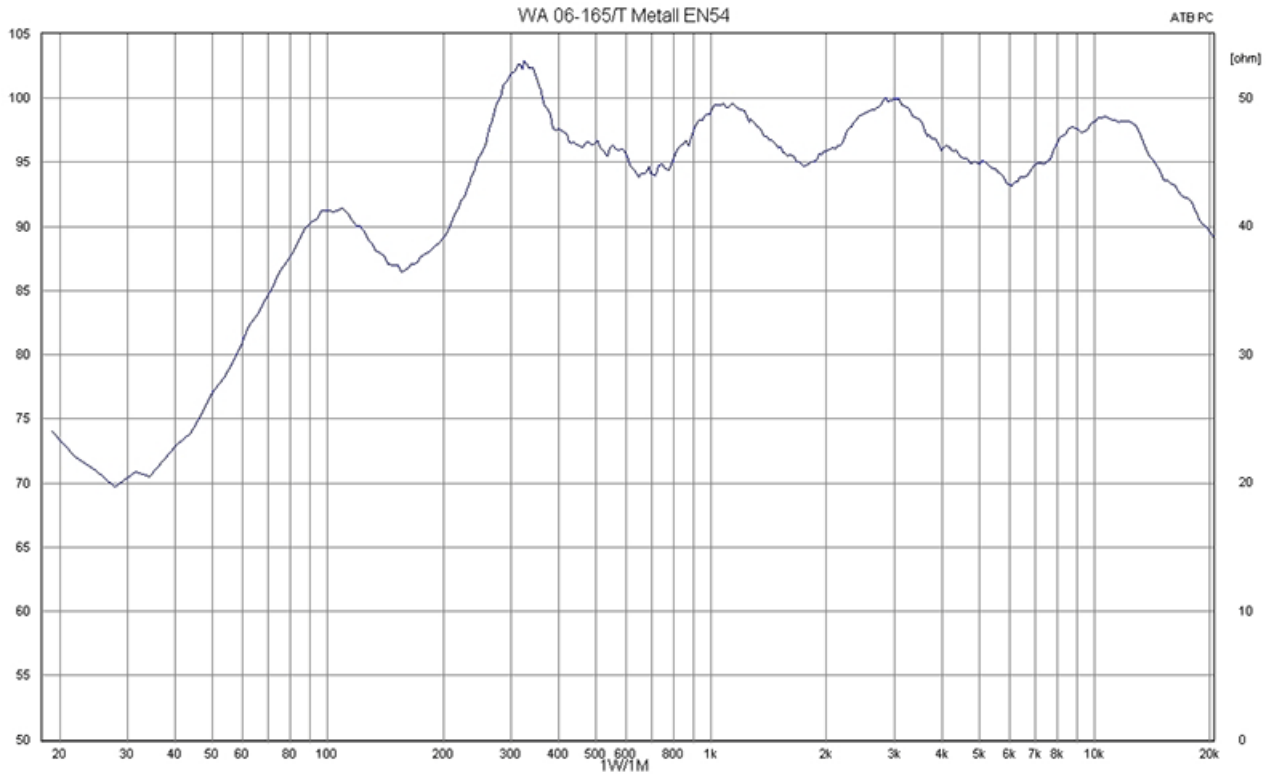
Copyright by Four-Audio GmbH & Co KG Licensed to AAC



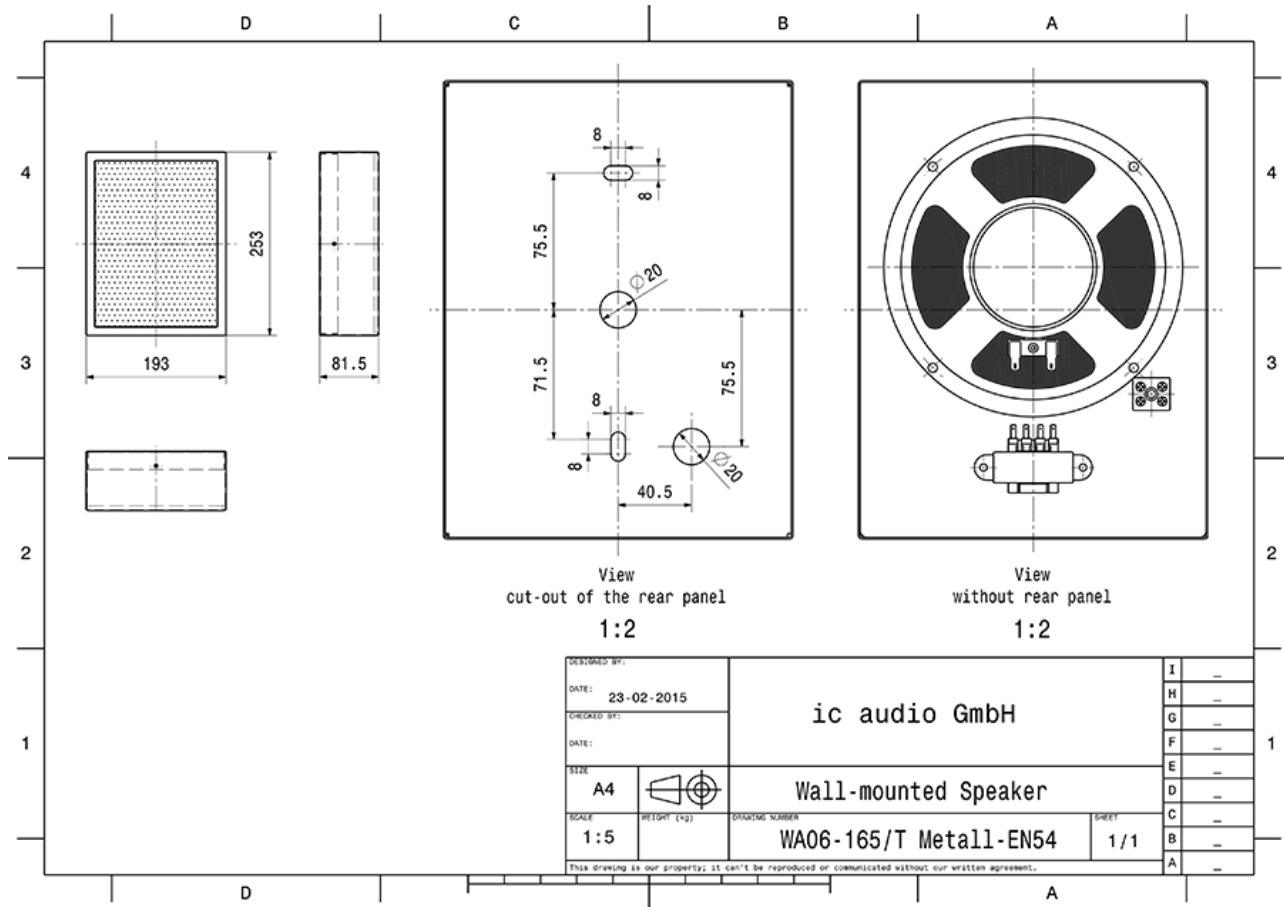
Copyright by Four-Audio GmbH & Co KG Licensed to AAC



Frequency Response Diagrams



Technical Diagrams



Technical Data (Electrical)

Description	WA 06-165/T Metall-EN54
Power	6/3/1,5 W
Frequency Range	170 - 18.500 Hz
Frequency Response	70 - 23.500 Hz
SPL 1W/1m, peak	98,3 dB
SPL , 1W/4m, peak	86,3 dB
SPL Pmax/4m, peak	94,0 dB
Sensitivity EN54-24, 1W/4m	79,6 dB
Dispersion -6dB, 500Hz	h=180° v=180°
Dispersion -6dB, 1KHz	h=84° v=69°
Dispersion -6dB, 2KHz	h=119° v=119°
Dispersion -6dB, 4KHz	h=62° v=79°

Technical Data (Mechanical)

Dimensions	257x192x80 mm
IP Rating	IP21
Weight (net)	1,90 kg
Temperature range	-20 / +80 °C
Mounting	Screws
Connector	2-pin ceramic block
Maximum cable cross section	8mm ²
Max. cable cross section loop	2x2mm ²
Colour	RAL 9010

Product Attributes



Measurements according to DIN IEC 268-5 | RoHS compliant (2011/65/EU)



Article Nr.: 20102198

Packing Unit: 8

